

## AGE ESTIMATE OF AKAMURA MOUNDED TOMB GROUP AND LOCATION ESTIMATE OF YAMATAI COUNTRY

Susumu Ogawa<sup>1</sup>

<sup>1</sup>Institute of Spatial Technology, Toyo, Koto-ku, Tokyo, Japan

Email: ogawa\_susumu\_phd@yahoo.co.jp

**KEY WORDS:** Ancient mound, Dating, Morphology, Sanguozhi, Spatial analysis, Spatial distribution, Watershed

**ABSTRACT:** In 2018, the ancient tomb was discovered in Tagawa, Fukuoka. The sizes of the tomb were measured by UAV. The length is 443 m, the diameter is 152 m, and the height is 33 m: the second biggest mound in Japan. Chinese history book, *Sanguozhi* (Chen, 280) reads Yamatai country occupied 27 countries in Japan in the 3<sup>rd</sup> century by the queen Himiko. The location of Yamatai was 840 km south from Soul with 70000 families, and the size of Himiko's tomb was 150 m diameters. The locations of Yamatai country and Himiko's tomb are still unknown. From *Sanguozhi*, the optimum location was estimated with the direction, the distance and family numbers. Family numbers were estimated from the river watershed areas. Kyushu islands have 28 big rivers, corresponding to 28 countries described in *Sanguozhi*. Each river corresponded to each country, and their family number was estimated by 2.5% of the watershed area with family number / 10 a. Finally, the Chikugo river watershed was a candidate of Yamatai country. Moreover, two kinds of tombs became candidates of Himiko's tomb.

### 1. INTRODUCTION

In the 3<sup>rd</sup> century in Japan, 30 countries were recognized by China. Yamatai country was a representative of them. However, the location of this country and Himiko's tomb was still uncertain. The fundamental reasons were *Sanguozhi* description (Chen, 280): the location of 8 countries was shown by the directions, the distances, and family numbers. Most of historians judged the location of each country by only the directions and distances. Nobody used the family numbers for the location of each country. If the location of each country was calculated by three parameters: the directions, the distances and the family numbers, the result should be changed. The family numbers can be derived from the river watershed areas: the constant ratios of rice fields exist each river watershed and each family needs ten a of rice field. Therefore, the river watershed corresponded to a country. For the past 100 years, two areas were discussed between two major universities: Kyushu island and Kinki; the former was selected from the directions in *Sanguozhi* by University of Tokyo while the latter was selected from the distances in it by Kyoto University. RMS, normalized Root-Mean-Square error, is the indicator of optimization for Yamatai country location. The optimum location was obtained for Yamatai country with RMS. On the other hand, in 2018, one big ancient tomb was discovered in Akamura, Tagawa, Fukuoka: the field survey by UAV showed the length is 443 m, the diameter is 152 m, and the height is 33 m: the second biggest keyhole-typed mound in Japan. The diameter of Himiko's tomb was described as 150 m in *Sanguozhi*, corresponding to this tomb. Moreover, 30 mounded tombs exist around Akamura mounded tomb, which are keyhole and round tombs and their shapes relate with the construction years. The regression equations were obtained for the construction year estimate. These big mounded tombs suggest the relationship with the Japanese emperors, This paper solved uncertain Japanese history in the third century, Yamatai and the queen Himiko locations by the optimization with three parameters, directions, distances, and family numbers each country of Yamatai described in *Sanguozhi*. The results were reasonable and should be validated by future archaeological research. The used model is very simple.

### 2. METHODS

#### 2.1 3D images

The 3D images for the tomb of Akamura were measured by UAV. UAV was Phantom 4 Professional with 4K camera. Pictures were synthesized to 3D orthogonal images with PhotoScan. The orthogonal image was processed to a monochromic silhouette and the edge image with Photoshop. Fractal analysis was carried out for these horizontal images and DEM. Fractal dimension  $D$  is defined as

$$D = \log N / \log R$$

where  $N$  is the number of pixels and  $R$  is the size of the images (Mandelbrot, 1983). The shape factor  $\phi$  is defined as

$$\phi = L^2 / S$$

where  $L$  is the maximum length of images and  $S$  is the area of the images. Topographical rules were also applied for horizontal images and cross sections of DEM (Appendix A).

#### 2.2 Dating the ancient tombs

Ueda (1969) showed some important results for the keyhole tombs: The keyhole tomb dimensions, the diameter  $a$ , the

bottom side b, and the length c, have positive correlation between b/c and b/a and depend on the construction year; three characteristic sizes showed integer ratios and categorized three shape types (Appendix B).

By the list of the ancient keyhole and round tombs, two regression expressions were obtained for the dating of discovered tombs. The types of the tombs were three: keyhole, round, and ellipse shapes and the dates each was estimated to be built. The keyhole type has three sizes, the diameter a, the base b, and the length c, which are correlated with the date of the construction (Ueda, 1969). The round type has two sizes, the diameter D and the height H, which are correlated with the dates of the construction. Ellipse tombs were very few and excepted.

### 2.3 Location optimization of Yamatai

The estimated locations of Yamatai are two areas, Kyushuu and Kinki (Appendix C), based on the directions and distances in *Sanguozhi* (Chen, 280). Nobody discussed the family numbers related with population each country. Each country has a family number, which correlated with the river watershed area. Each family has 10 a of a paddy field and the ratio of paddy fields was estimated as 1 to 5 % of each river watershed, 2.5 % on average.

$$\text{Family number} = a \cdot \text{River watershed area} \quad (1)$$

where a is the ratio of paddy field, 1 to 5%.

Three parameters, the directions, distances and family numbers should be treated evenly for the optimization of the location of Yamatai country. RMS, normalized Root-Mean-Square error, was introduced as the indicator of optimization for Yamatai country location.

$$\text{RMS} = \sqrt{\left(\frac{DISa}{DISs} - 1\right)^2 + \left(\frac{DIRa}{DIRs} - 1\right)^2 + \left(\frac{FAMa}{FAMs} - 1\right)^2} \quad (2)$$

where *DISa*: the actual distance, *DISs*: the distance in *Sanguozhi*, *DIRa*: the actual direction, *DIRs*: the direction in *Sanguozhi*, *FAMa*: the actual family number, and *FAMs*: the family number in *Sanguozhi*. The origin of the distances and directions was Seoul in *Sanguozhi*. Each watershed has the area with the location, which the authors determined by the biggest city each. The area of the watershed was selected the present area each.

## 3. RESULTS

### 3.1 3D images

The dimensions of Akamura tomb in Tagawa were bigger than Hashihaka tomb and smaller than Nintoku (Daisen) in Kinki. The Akamura dimensions were the maximum length: 443 m; the circle diameter: 152 m; the height: 33 m; and the bottom side: 230 m. Hashihaka dimensions were 278 m, 150 m, 30 m, and 130 m, respectively. Nintoku (Daisen) dimensions were 525m, 286m, 39.8m, and 347m.

The fractal dimensions of Akamura tomb were 1.859 for the silhouette for 1.249 for the edge. Those of Hashihaka were 1.846 and 1.227; those of Nintoku (Daisen) were 1.866 and 1.252 (see Figure 1).

The shape factor of Akamura was 2.53. That of Hashihaka was 2.57 while that of Nintoku (Daisen) was 2.21.

As shown above, Akamura tomb was between Hashihaka and Nintoku (Daisen) tombs, and in the same shape as Hashihaka and Nintoku (Daisen) tombs.

### 3.2 Dating the ancient tombs

Ueda(1969) categorized the keyhole tombs into 3types: A type for Hashihaka, B type for Nintoku, and C type for Richu. Akamura tomb is O type different from three types. Nintoku and Richu were the 16<sup>th</sup> and 17<sup>th</sup> emperors. Akamura tomb might be the emperors or the nearest master.

The regression line of keyhole shape tombs was next equation (N=38).

$$\text{Year} = 296.12 \cdot b/c \quad (r^2 = 0.3049) \quad (3)$$

where b is a square size and c is a total length (see Figs.2,3, and 4).

The regression line of round barrows was next equation (N=85).

$$\text{Year} = 59.57 \cdot H/D + 454.13 \quad (r^2 = 0.2463) \quad (4)$$

where H is the height of the tomb and D is the diameter of the tomb (see Figs 5 and 6).

Thus, Akamura keyhole tomb was estimated to be constructed as 399AD, while Onzuka was estimated as 307AD with an error of 30 years.

Therefore, these tombs might be constructed in the late 3<sup>rd</sup> to the 4<sup>th</sup> century, which corresponded to the Himiko era, late the 3<sup>rd</sup> century.

### 3.3 Location optimization of Yamatai

According to a list of rivers, watershed area and sites are shown in Table 1 &2. From the watershed areas, family numbers were calculated each. Finally, the results were obtained as Table 3. Yamatai country was estimated as the Chikugo river

watershed.

## 4. DISCUSSION

### 4.1 Two locations of candidates for Yamatai

Most of historians estimated Yamatai country would exist in Kyushu and Kinki: the former should be the Chikugo river watershed, while the latter should be Yamato river watershed. These location estimates used the direction and distance from Seoul in Korea as described in *Sanguozhi*. In this paper, the location estimate used the direction, distance and family number with RMS. No historians recognized the family number depended on the river watershed areas. The paddy fields distributed at a certain ratio of the total river watershed areas, 1 to 5 % of the total. Finally, the optimum ratio was 1.94%. Most of the countries in Japan constitute of river watersheds, therefore, the countries in the 3<sup>rd</sup> century in Yamatai alliance should be also river watersheds each. For more than 100 years, historians could not determine the location of Yamatai between Kyushu and Kinki theories. But, this paper proposed the optimum method to determine the location of Yamatai adding the family numbers as the third parameter and using RMS as an indicator for optimization. As a result, Kyushu theory was accepted in this paper, especially the continuous theory.

### 4.2 Himiko's tomb

*Sanguozhi* described Himiko's tomb had a diameter of 150 m. This statement suggested Himiko's tomb would be a round tomb. However, most historians and archeologists supported Hashihaka tomb in the Yamato river watershed. This type was a keyhole tomb. In Tagawa many tombs were a round type. Therefore, true Himiko's tomb might be a round type. Onzuka tomb was a round type with a diameter of 150 m, corresponding to *Sanguozhi* description. Moreover, the construction year was estimated to be 307±30 AD. The location of Yamatai was estimated in the Chikugo river, while the location of Himiko's tomb was estimated in the Onga river. Both two rivers are neighbors.

## 5. CONCLUSIONS

The authors concluded as next.

- (1) Fractal analysis showed almost the same values of fractal dimensions between Akamura tomb and Nintoku Emperor tomb.
- (2) Two gigantic tombs in Tagawa were estimated in 307 to 399 year AD with an error of 30 years, corresponding to Himiko's tomb year. Both tomb diameters were 152 to 264 m, corresponding to *Sanguozhi* description.
- (3) Three parameters in *Sanguozhi*, the direction, distance, and family number, determined Yamatai country location the Chikugo river watershed, and rejected the Yamato river watershed with the optimization of the location. Therefore, Hashihaka's tomb was also rejected as Himiko's tomb that most historians supported.
- (4) The location of Yamatai was estimated in the Chikugo river, while the location of Himiko tomb was estimated in the Onga river, which is a neighbor of the Chikugo river.

In the 3<sup>rd</sup> century, Yamatai country was a Japanese representative. However, the location of this country and Himiko's tomb was still uncertain. The authors introduced a new parameter from *Sanguozhi* description to determine the location of Yamatai, which was the Chikugo river watershed. On the other hand, in 2018, a gigantic tomb was discovered in Onga river watershed with a diameter of 150 m, corresponding to *Sanguozhi* description. Both two locations are very near and the two rivers are neighbors. No historians could determine the locations of Yamatai and Himiko's tomb for more than one hundred years. The optimization by the multivariable analysis with three components could determine the location of Yamatai. However, the archaeological research was not carried out for Akamura keyhole tomb now. Therefore, the validation of the dating should be required for the archaeological research near future.

## ACKNOWLEDGEMENTS

The authors appreciate for Mr. Shinzo Fukunaga and Takako Amano's cooperation in Akamura research in 2018.

## REFERENCES

- Chen, S., 280. Wei history, *Sanguozhi*.  
Ueda, H., 1969. *Keyhole tombs*, Gakuseisha.  
Livi-Bacci, M., 2001. *A concise history of world population*, Blackwell Pub.  
Ogawa, S., Y. Taniguchi, T. Sakurai, S. Fukunaga, 2018. Fractal analysis for the mounded tomb of Himiko, Yamatai, 39<sup>th</sup> ACRS, Kuala Lumpur.  
Taniguchi, Y., S. Ogawa, T. Sakurai, S. Fukunaga, 2018. 3D model by UAV for the mounded tomb of Himiko, 39<sup>th</sup> ACRS, Kuala Lumpur.  
Ogawa, S., Y. Taniguchi, 2019. Age estimate for the mounded tomb of Himiko by shape analysis, 40<sup>th</sup> ACRS, Daejeon.  
Taniguchi, Y., S. Ogawa, 2019. Spatial distribution for the ancient mounded tombs using UAV and digital maps in Fukuoka, 40<sup>th</sup> ACRS, Daejeon.  
Mandelbrot, B., 1983. *The Fractal Geometry of Nature*, W. H. Freeman and Company, New York.

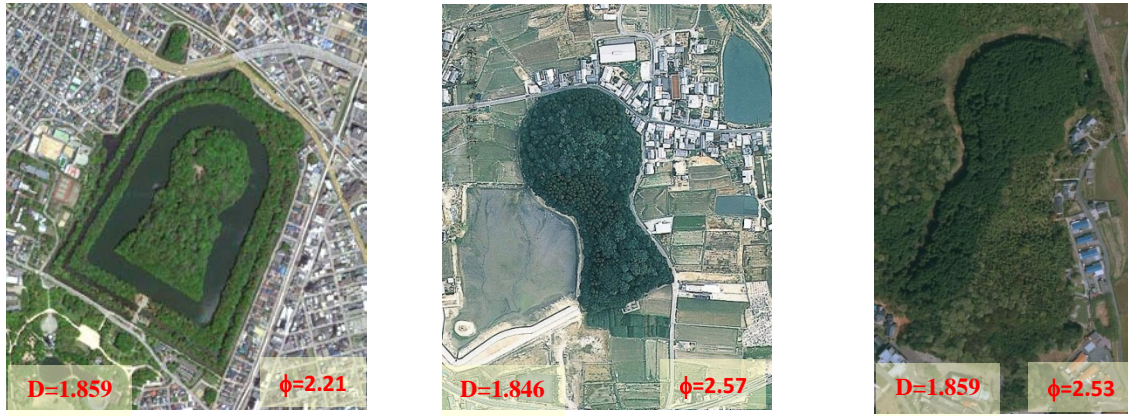


Figure 1 Three tombs: Nintoku, Hashihaka and Akamura

Table 1 List of Kyushu rivers

River	Watershed area km <sup>2</sup>	Family number
Onga	1026	25650
Chikugo	2860	71500
Matsuura	341	8525
Rokkaku	341	8525
Honmyo	249	6225
Kikuchi	996	24900
Sirakawa	480	12000
Midori	1213	30325
Kuma	1880	47000
Yamakuni	540	13500
Ohno	1465	36625
Ohita	650	16250
Gokase	1820	45500
Omaru	474	11850
Ohyodo	2230	55750
Sendai	1573	39325
Kimotsuki	485	12125
Bansho	464	11600

Table 2 List of Kinki rivers

River	Watershed area km <sup>2</sup>	Family number
Enokawa	3900	97500
Yoshino	3750	93750
Takahashi	2670	66750
Shingu	2360	59000
Watari	2270	56750
Hii	2070	51750
Yoshii	2060	51500
Yura	1880	47000
Kinokawa	1660	41500
Ohta	1700	42500
Niyodo	1560	39000
Yamato	1080	27000

Table 3 List of rivers for countries

Country	Continuous	Radiated	Kinki
Ito	Zuibaiji	Zuibaiji	Zuibaiji
Nu	Hakata	Hakata	Hakata
Fumi	Hanazuru	Shika	Shika
Toma	Onga	Kuma	Hii
Yamatai	Chikugo	Chikugo	Yamato
RMS	0.9241	0.6050	1.5552

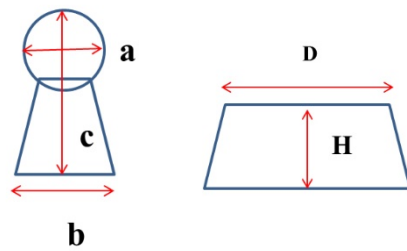


Figure 2 Keyhole and round tomb sizes

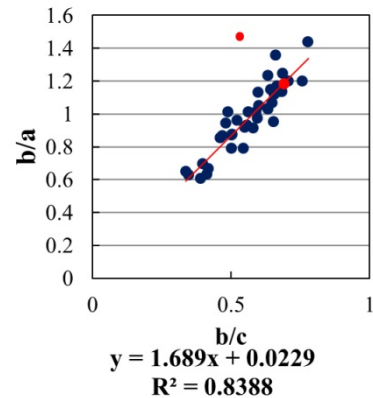


Figure 3 Keyhole tomb size correlation

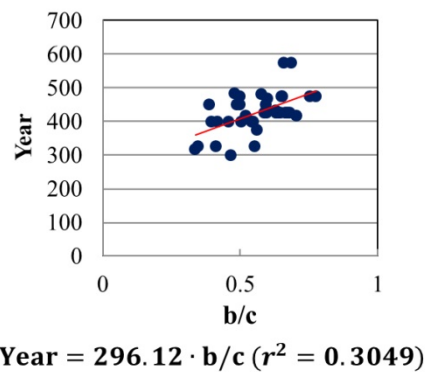


Figure 4 Keyhole tomb age estimate

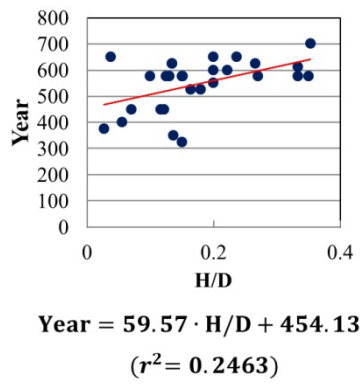


Figure 5 Round tomb age estimate

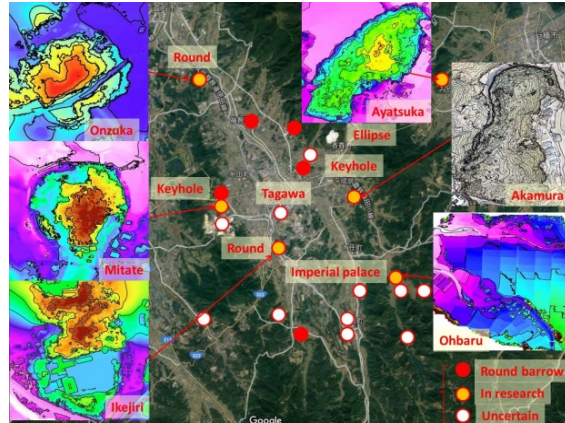


Figure 6 Spatial distribution of tombs in Tagawa



Figure 7 Optimized Yamatai countries (Radiated theory)



Figure 8 Optimized Yamatai countries (Continuous theory)

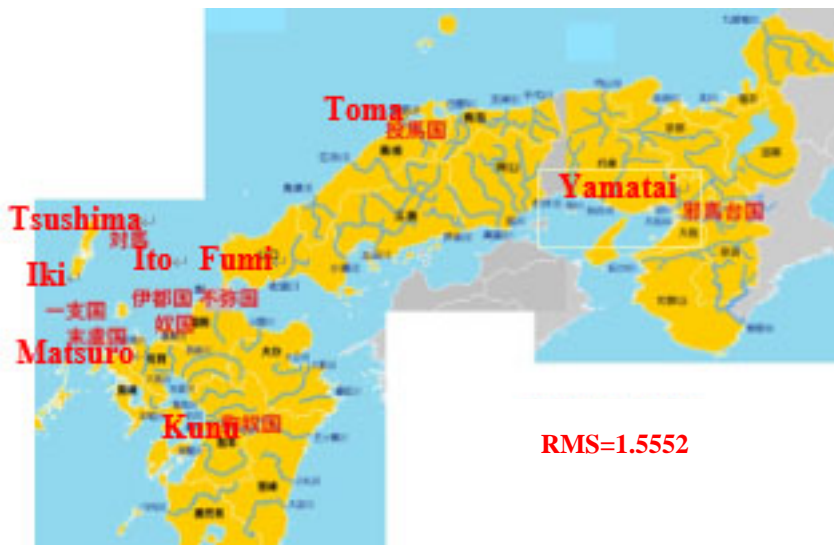


Figure 9 Optimized Yamatai countries (Kinki theory)

APPENDIX A: Photos by UAV



Photo 1 UAV route map for Akamura tomb

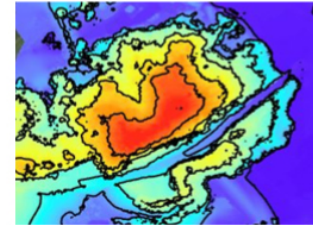
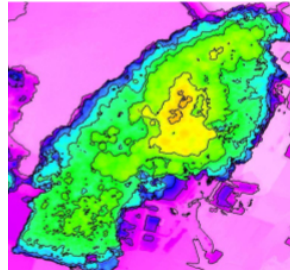
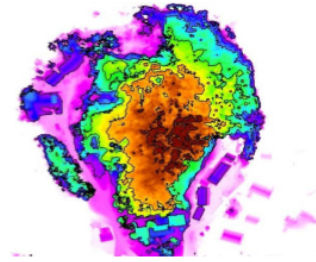
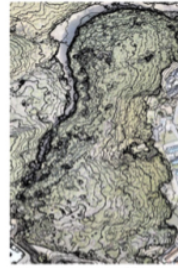
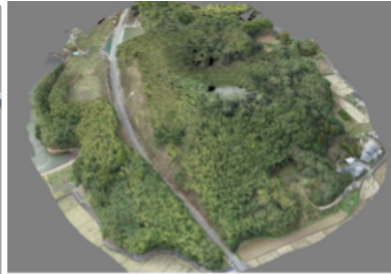


Photo 2 DSM from UAV



3D model of Akamura



3D model of Onduka



3D model of Mitate.



3D model of Miyabaru.



3D model of Ayaduka.



3D model of Syoyaduka.



3D model of Sosya

Photo 3 3D models of six tombs by UAV

APPENDIX B: Four types of keyhole mounded tombs

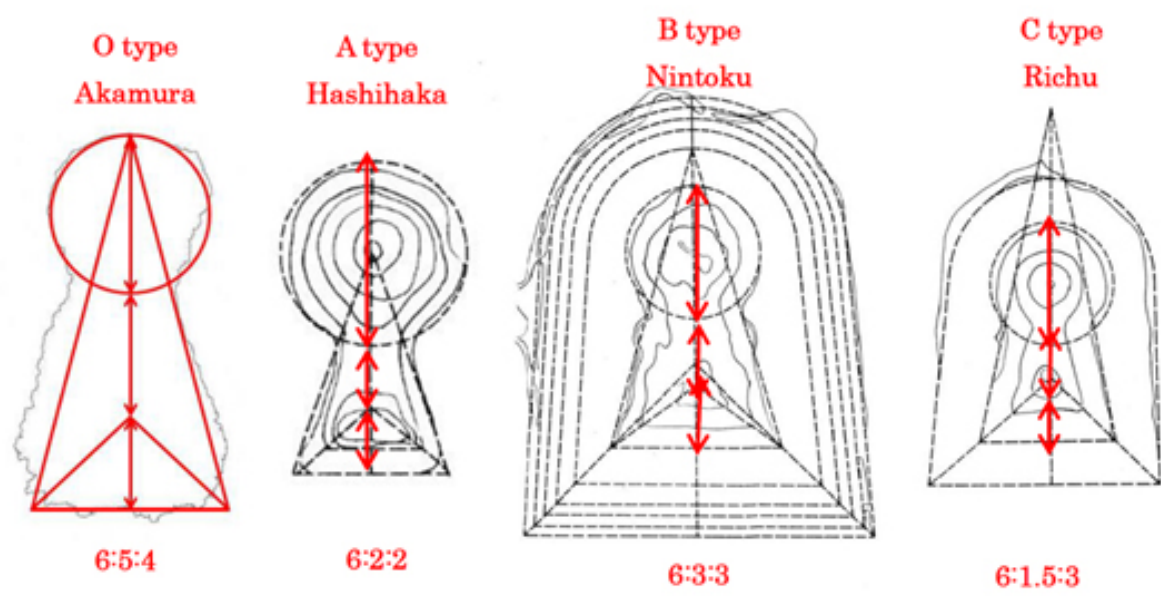
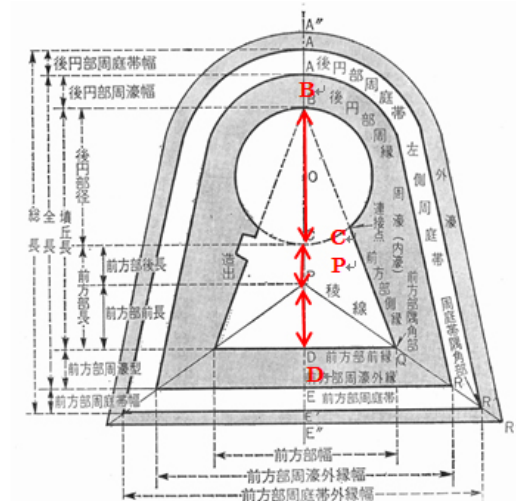


Figure B1 Four types of keyhole mounded tombs by Ueda(1969) classification. Sides BC, CP, and PD are characteristic integers Akamura tomb is O type (left)

## APPENDIX C Three theories developed from *Sanguozhi*

Yamatai country location was estimated to be Kyushu and Kinki areas. The former was developed to Continuous and Radiated theory.

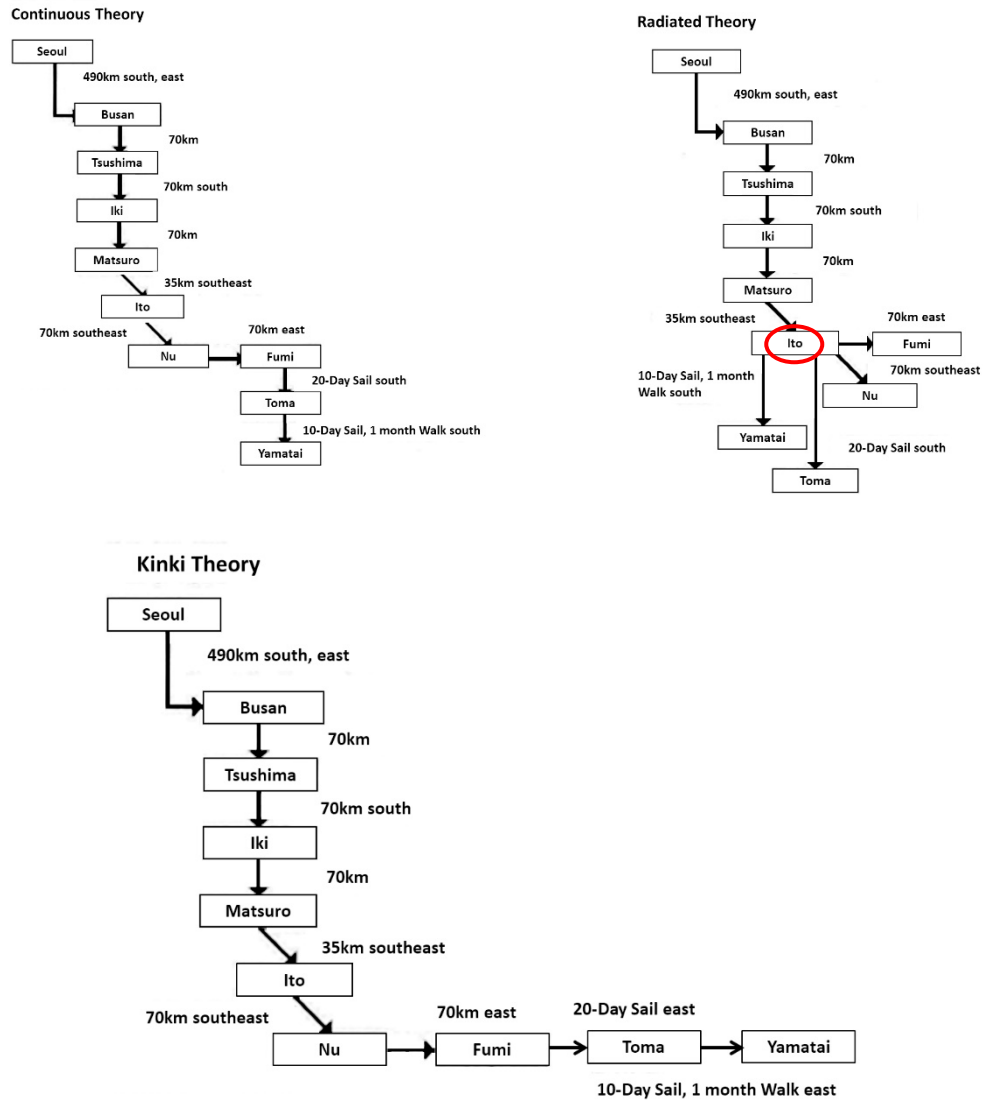


Figure C1 Three theories developed from *Sanguozhi*: Continuous theory (left upper), Radiated Theory (right upper), Kinki theory. Japanese historians had discussed the location of Yamatai for the past more than 100 years, but nobody solved it. They proposed three theories as shown in Figure C1. All historians ignored a parameter, family numbers, which were described in *Sanguozhi*. The authors introduced this parameter into multivariate analysis with normalized root-square-mean errors, RMS for three theories. Continuous Theory determined the locations of Yamatai countries in the same order as described in *Sanguozhi*, while Radiated Theory changed Ito country as the center of Yamatai adjusting real locations of Kyushu. However, Kinki Theory ignored the directions of the countries described in *Sanguozhi* adjusting real locations of Kinki. Kyushu is a big island and Kinki is the western part of Japan. The relationship between Yamatai and Japanese emperors was still uncertain.